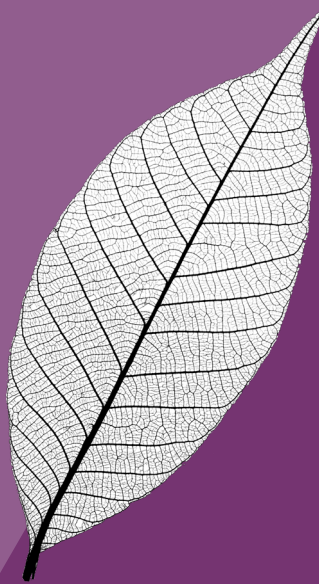


# NewSpring Franchise



NewSpring Franchise invests in innovative franchise and multi-unit concepts in large and growing markets. We are uniquely positioned within the lower-middle market with over 40 years of sector specific operating and investing experience.

NewSpring Franchise is part of NewSpring, which partners with the innovators, makers, and operators of high-performing companies in dynamic industries to catalyze new growth and seize compelling opportunities. We manage over \$3.0 billion across five distinct strategies covering the spectrum from growth equity and control buyouts to mezzanine debt.

## ABOUT NEWSPRING

**\$3.0bn+**  
Assets under management

**5**  
Investment strategies

**200+**  
Investments made since 1999

**40+**  
Investment professionals

## NEWSPRING FRANCHISE INVESTMENT CRITERIA

### Company Size

**\$5mm - \$50mm**  
Revenue

**\$1mm - \$5mm**  
EBITDA

### Transaction Types



### Multi-Unit Companies

- Franchisors
- Franchisees
- Non-Franchised Company-Owned

### Representative Sectors

- Restaurants
- Personal Care
- Education and Child Related Services
- Pet Services
- Home Services

### Differentiating Factors

- Seasoned team of former CEOs and senior execs with experience focused exclusively on the multi-unit brand market
- Leverage from NewSpring infrastructure and 20-year investment track record
- Deep operating DNA utilized in an active board role to create value supplemented by a network of operating experts
- Utilizing NewSpring's proven "ThreeM" Investment Methodology to underwrite deals while preserving capital and maintaining upside potentials
- Position portfolio companies for maximum value creation with attractive avenues for exit to up-market sponsors and over 100 public brands

## NEWSPRING FRANCHISE INVESTMENT TEAM



Satya Ponnuru



Patrick Sugrue

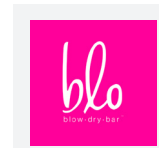


Sean Whitehead



Michaela McGeary

### Team Operational Experience



## CONTACT

For investment opportunities or questions, please contact:  
Adam VeVerka at 610.567.2392 or aveverka@newspringcapital.com  
Ryan Schafer at 630.621.8305 or rschafer@newspringcapital.com

## OUR OFFICES

Philadelphia • Baltimore • Chicago • Denver • New York  
Phone: 610.567.2380 • Fax: 610.567.2388 • newspringcapital.com



Blo is North America's original blow dry bar and the world's largest blow dry bar franchise



Duck Donuts is one of the nation's fastest-growing donut franchise companies



Central Bark is a leading pet services franchisor, offering boarding, grooming, training services and specialty products



Federal Donuts is a Philadelphia-based culinary pioneer in the fast-casual space serving donuts, fried chicken, and coffee

**CONTACT**

For investment opportunities or questions, please contact:  
Adam VeVerka at 610.567.2392 or [aveverka@newspringcapital.com](mailto:aveverka@newspringcapital.com)  
Ryan Schafer at 630.621.8305 or [rschafer@newspringcapital.com](mailto:rschafer@newspringcapital.com)

**OUR OFFICES**

Philadelphia • Baltimore • Chicago • Denver • New York  
Phone: 610.567.2380 • Fax: 610.567.2388 • [newspringcapital.com](http://newspringcapital.com)